

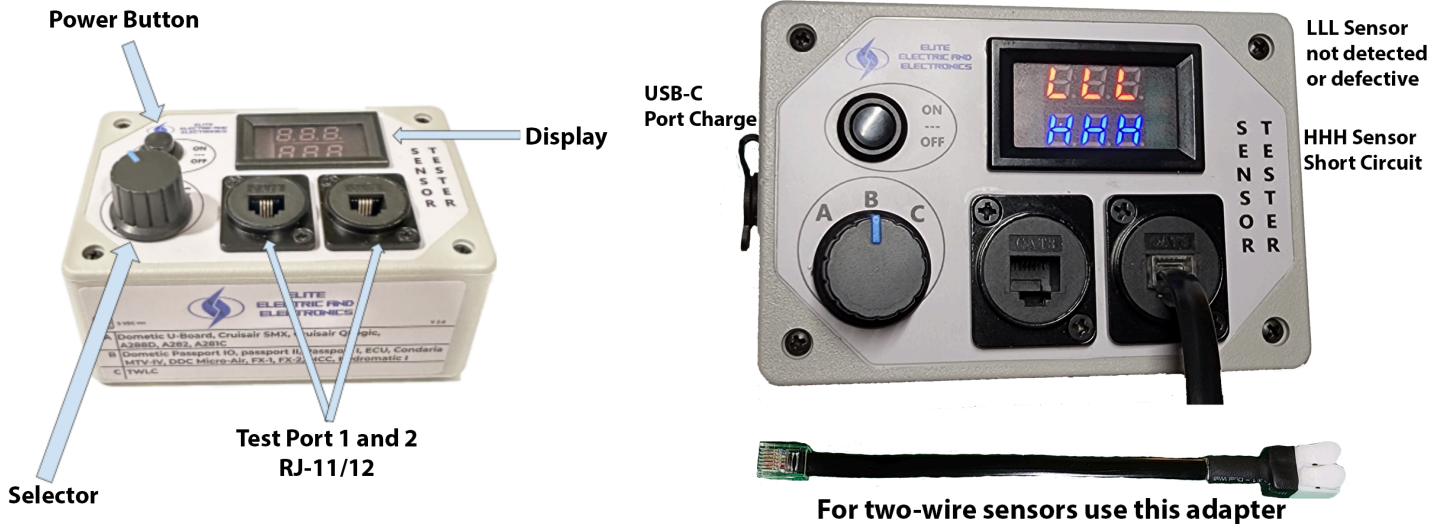
# Sensor Tester EETV2.0

## Operation Manual

The EETV2.0 sensor tester was designed to test refrigeration and marine air conditioning sensors for the main brands on the market.

Easy operation

Getting to know the device:



How to use:

- 1 - Press the On Off button,
- 2 - On the lower side of the test there is a label with the models of the main cards on the market. select between A, B or C depending on the sensor model to be tested
- 3 - Connect the sensor to one of the 2 RJ-11/12 ports, if your sensor is 2 wires use the adapter
- 4 - Check the information on the display, if it continues LLL, the sensor is defective or poorly connected, check the connection, if the information on the display is HHH, the sensor is shorted
- 5 - If you have doubts about the accuracy of the tested sensor, use the second port with a new sensor to compare
  - Please note that if you select the incorrect model you will be informed of a higher or lower temperature value

Before first use, charge for 2 hours

Included in the box:

- \* USB-C charging cable
- \* 2 x Adapters for 2-wire sensors
- \* Protective Case
- \* Warranty card



**ELITE  
ELECTRIC AND  
ELECTRONICS**

E-mail: [sales@elite-electronic.com](mailto:sales@elite-electronic.com)  
Website: [elite-electronic.com](http://elite-electronic.com)



Thank you for your purchase,

we have sensors for the main brands on the market visit our website